



health

Department:  
Health  
PROVINCE OF KWAZULU-NATAL

# Department of Health KwaZulu-Natal

## Mobile Health Clinic and Toy Library

### Project

GCINA NS RADEBE- DIRECTOR PRIMARY HEALTH CARE KZN  
CORNE PETERS – SOCIAL PROGRAMME COORDINATOR – MONDI  
MONICA STACH – CEO - COTLANDS

12 JULY 2019

Cotlands



1. INTRODUCTION
2. ECD POLICY
  - DEPT. OF HEALTH MANDATE
  - DEPT. OF SOCIAL DEVELOPMENT MANDATE
3. KZN BACKGROUND
4. INTERSECTORAL COLLABORATION - PROVINCIAL AND WARD
5. PARTNERSHIP
6. THE MODEL
7. PROJECT IMPLEMENTATION PLAN
8. COST OF PROJECT
9. CONCLUSION

Cotlands



- National Health Insurance bill - section 158 and 159
- Community Oriented Primary Care framework
- Community Based service delivery model - community involvement, development of self-reliance and ownership of one's health
- Community Oriented Primary Health Care Indaba in May 2018 and a PHC Conference in April 2019
- KZN PHC declaration

Cotlands



Mobile health clinic and toy library - A breakthrough innovation in that it demands:

- A shift from health only approach
- A shift from sickness oriented service planning to a health oriented one
- An opportunity for inter-sectoral collaboration
- Centre based only service delivery platform to a non-centre based platform

Cotlands



**Facility and outreach health workers must provide:**

- **Health Care and Nutrition**

- ✓ RTHB and Side by Side campaign- Preventative care
- ✓ Immunization
- ✓ Nutrition screening
- ✓ Counselling on infant health
- ✓ Growth and
- ✓ **Stimulation for early learning**

**Cotlands**



- **Community Health Workers – RTHB provide**
  - ✓ Food and Nutritional support and screening
  - ✓ Support for positive parenting
  - ✓ Child safety and **early learning**
- **Micro –Nutrients**
  - ✓ **Developmental screening** and early identification
- **Referral:**
  - ✓ Mental health, substance abuse, domestic violence and neglect

Cotlands



SIYAQHUBEKA  
Forestry for Life



**mondi**

# ECD Policy -DSD

- Social protection programmes – CSG and birth registrations
- Parent support programmes – under two parents – early education – to be promoted by community health workers and clinic health care workers
- Opportunities for learning from birth – provision of early learning programmes that provide stimulation of children’s development and learning which includes:
  - CHW and health-facility based programmes
  - Playgroups
- Children living with disabilities:
  - Early detection, and remedial intervention
  - Community based rehabilitation
  - Parenting support
  - Sufficient quality child care
  - Material and financial support

Cotlands



SIYAQHUBEKA  
Forestry for Life



## KwaZulu-Natal realities

- 11 074 784 living in KZN
- 1.3 million children between birth to 4 years
- Rural and urban nodes
- Second largest economy in the country
- 38% employment rate
- Not reached population coverage with mobile toy library model

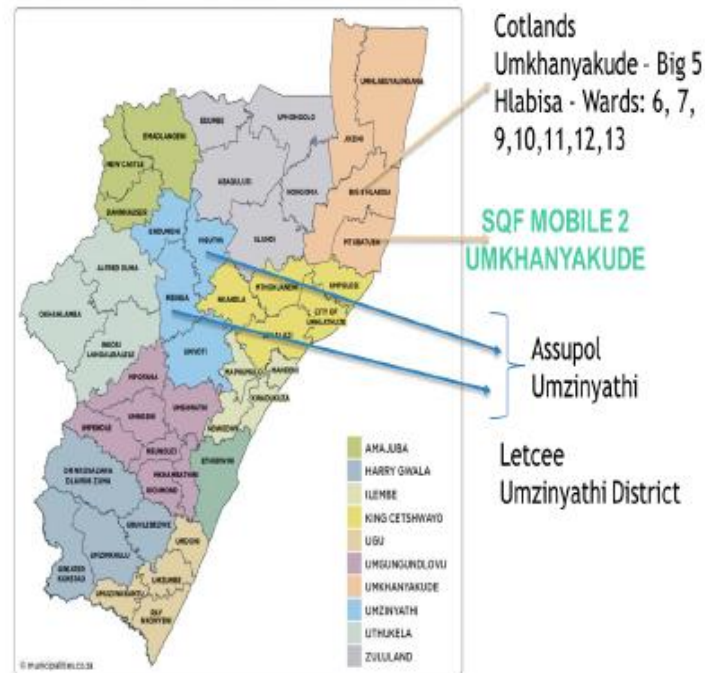


Figure 5: KZN districts and NGO's with mobile toy libraries



## KwaZulu-Natal children

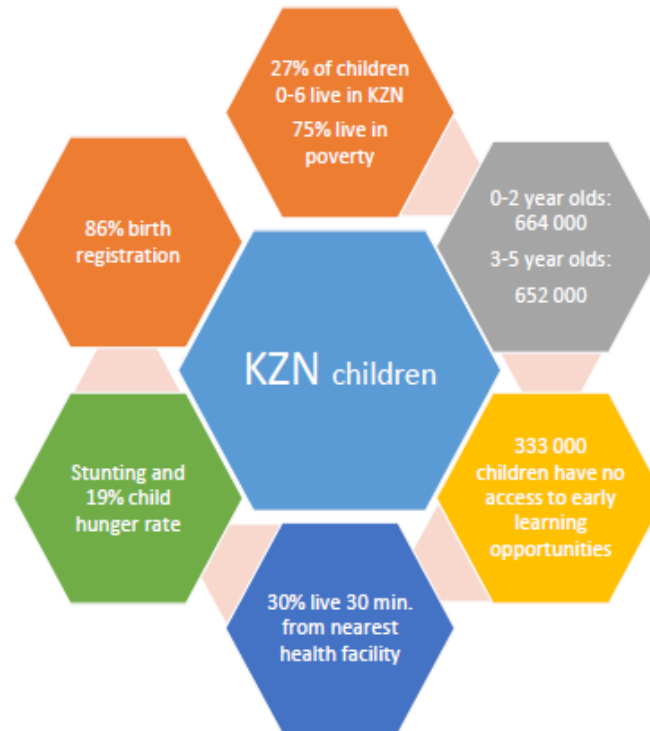


Figure 6: Statistics relating to KZN children under five years of age



health

Department:  
Health  
PROVINCE OF KWAZULU-NATAL

# INTER-SECTORAL COLLABORATION- OSS



**FIVE CRITICAL AREAS OF OPERATION SUKUMA SAKHE**

**Cotlands**



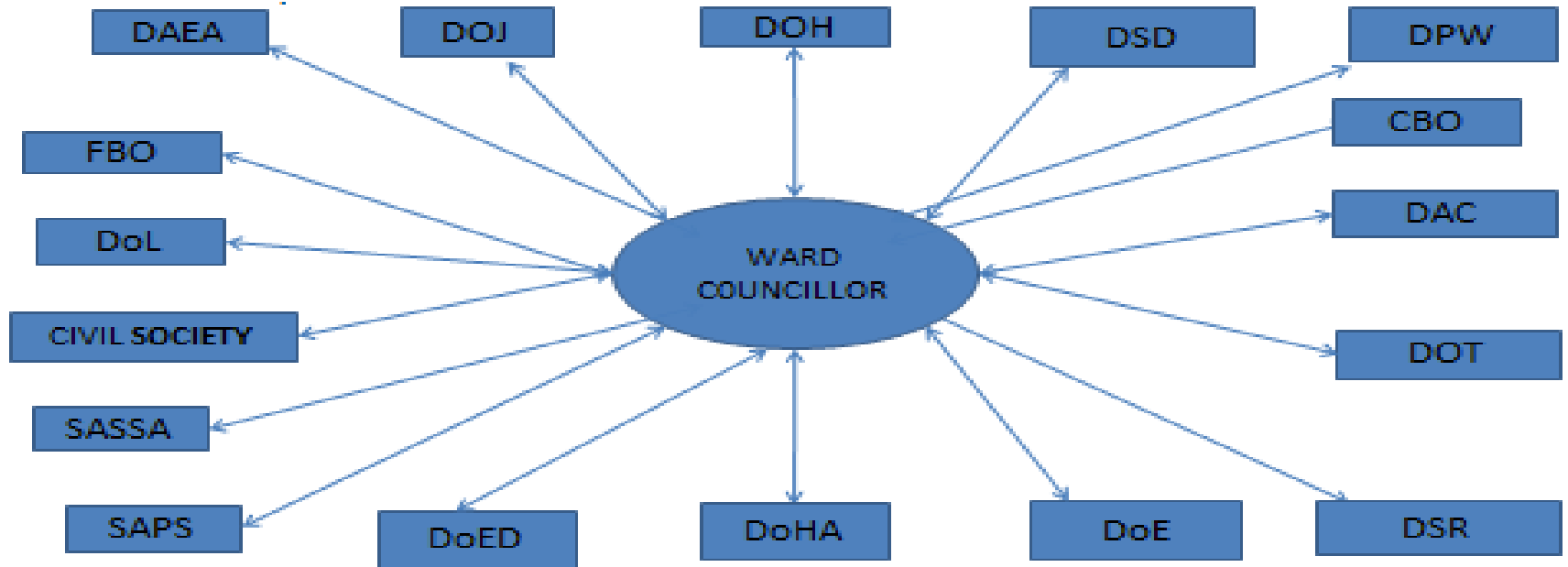
**SIYAQHUBEKA**  
Forestry for Life





# INTER-SECTORAL COLLABORATION- OSS

## WAR ROOM PARTICIPANTS



# PARTNERSHIP

- **DEPT OF HEALTH** – MANDATE- SERVICE DELIVERY, DEPOT & STAFF
- **MONDI & SQF** – NON- CENTRE BASED SERVICE DELIVERY PLATFORM – MOBILE VEHICLES AND TOYS
- **COTLANDS** – NON- CENTRE BASED SERVICE DELIVERY PLATFORM – TOY LIBRARY, PROJECT MANAGEMENT AND EXPERTISE

Cotlands



# The model

- Clinic with a toy library depot
- Visiting points
- Children
- Inter-sectoral committee
- Collaborate to provide integrated services

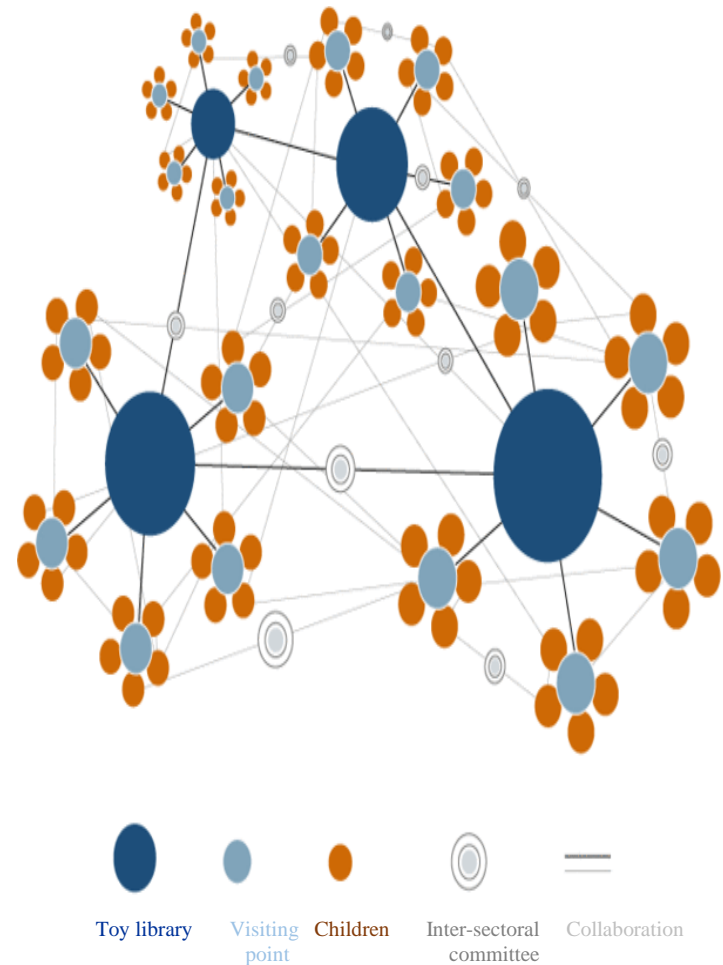


Figure 1: Mobile Health Clinic and Toy Library Model



health

Department:  
Health  
PROVINCE OF KWAZULU-NATAL

# CONCLUSION.

- COMMUNITY ORIENTED PRIMARY CARE FRAMEWORK
- COMMUNITY BASED SERVICE DELIVERY MODEL
- OPERATION SUKUMA SAKHE STRATEGY
- PARTNERSHIP
- ECD MANDATE

Cotlands





**health**

Department:  
Health  
PROVINCE OF KWAZULU-NATAL

# Thank you



*FIGHTING DISEASE, FIGHTING POVERTY, GIVING HOPE*