



Kungani ngingamboni longinakekelako kanye namkhulu?

Laura Harvey
(Translated into Siswati)



Kuvaliwe
kwesikhashane

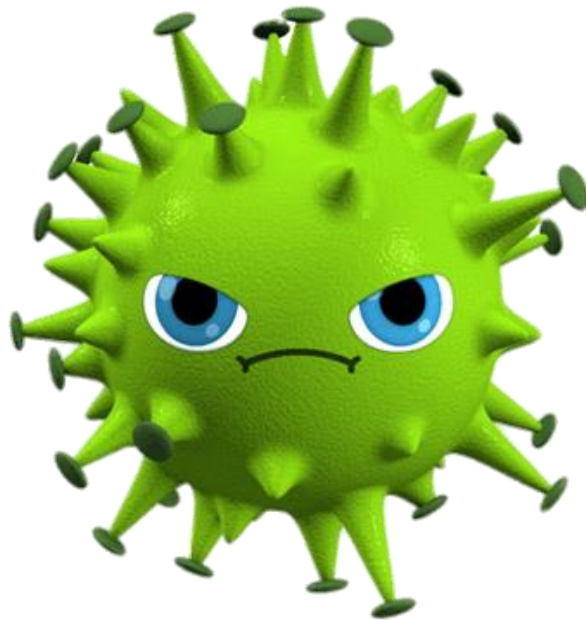
Akukukatayeleki kuwe loku
lokwentekako.
Tikolo tivaliwe...
Emigwacweni kuthulile...
Futsi uyephi Mkhulu
nalokunakekelako.





Bona, kunanali ligciwane
lelihamba yonkhe indzawo,
njengemkhuhlane.
Lelingasenta sive kushisa , futsi
sifune kukhwehlela.
Asikho sidzingo sekukhatsateka
njengoba utawuba ncono,
Uma utiva ungakaphatseki
kahle utoba ncono
kungekudzala.





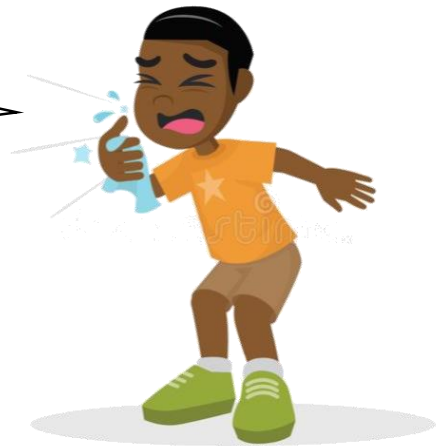
Lentfo ngaleligciwane
(I coronavirus),
Liba metima kulabanye bantfu
lesibatsandzako,
Uphindze ungesabi ngoba bantfu
labanyenti bayelulama,
Kepha kufanele sicaphele futsi
sisebentisane.



Leligciwane lifika njengelisela,
futsi litseleleka ngekusuka
emntfwini liye kulomunye.
Kodvwa kunyenti lesingakwenta
kutsi kungabi metima.
Njengekugeza tandla tetfu sibe
sibala siyewufika emashumini
lamabili...
Nensipho - Ciniseka usebentisa
lenyenti!



Ubusiseke



Uma ukhwehlela noma
utsimula, kumele usebentisa
I tissue.
Noma ukhwehlelele engcozeni
yakho, tsine sitawutsi
“ubusiseke”
Kepha intfo lenhle
yekuncandza leligciwane,
kutsi singabonani nalabo
labatselekile.

Ngaleyoy ndlela siyati
singabagcina baphephile,
Futsi sincandze leligciwane
kutsi lingabhebhetseki.
Loku kwesikhashana, futsi
angeke kuhlale kukhona,
Ngako asibukeni phambili
kutsi kunini lapho
siyophindze sibe ndzawonye!





Ninjani
futsi!



Kepha kwanyalo singachumana
ngetindlela letehlukene.
Singakhuluma ngelucingo sicoce
ngako konkhe ngelusuku lwetfu.
Singabonana ngelucingo lwe -
video,
Sicoce ngesimomphilo, noma
ngabe kukhulu nome kuncane.



Kutawuba matima ngoba angeke
sikhone kuhlala ndzawonye futsi
sidlale, noma sihlale singumndeni
njengalokutayelekile.

Loku kwenta lokunakekelako
naMkhulu baphatseke kabi,
lokumatima kubo kutsi angeke
bakhone kukubona.

Ligciwane
selihambile



Bakutsandza kakhulu futsi
batawulindza,
Uma sesiva kumabonakudze
kutsi leligciwane selihambile.
Kodvwa kwanyalo, asenteni
konkhe lokusemandleni,
Ngako khumbula...



UHLALE UGEZA LETO TANDLA.

