



Kungani ngingamboni u Nanny noMkhulu?

Laura Harvey
(Translated into isiZulu)



Izikole
zivaliwe

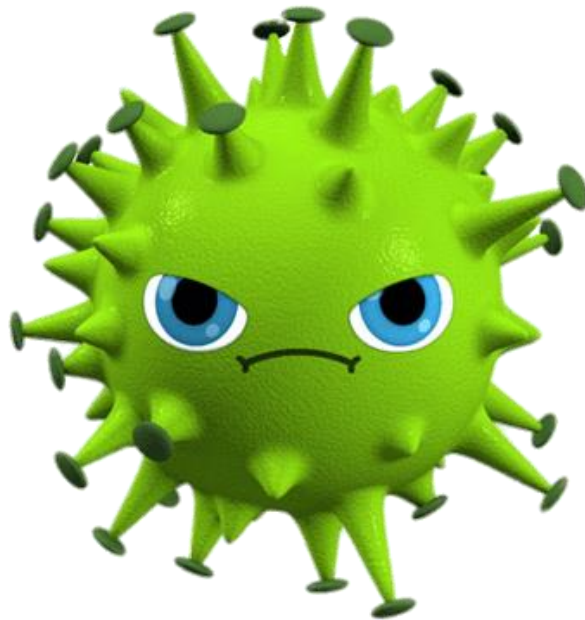
Kufanele ngabe
kuyamangaza ngempela
ukuthi kwenzakalani
Izikole zivaliwe
Kuthulekile emigwaqeni
Kungabe u Nanny noMkhulu
baye kuphi





Uyabona kunaleligciwane
elizungezayo njengokubanda
noma umkhuhlane
Lizosenza sishiselwe,
lisikhwehlelise futhi
Asikho isidingo sokukhathazeka
konke kuzolunga
Uma ungazizwa kahle,
uzobancono masinyane





Okukhona ngale Coronavirus
(igama laleligciwane)
Ukuthi kunzima uma lihlasela
abantu esibathandayo,
Kodwa ungesabi njengoba
abangingi bayasinda,
Kodwa kufanele siqaphele,
sisebenze ndawonye

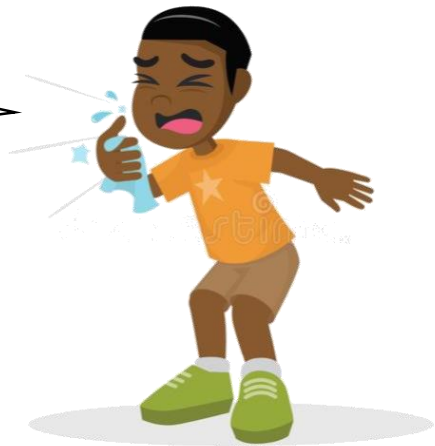


Leligciwane alibonakali futhi lidlula
kumuntu oyedwa liye komunye,
Kodwa kuningi esingakwenza ukuze
izinto zingabi zimbi kakhulu
Njengokuwasha izandla zethu
ngensipho imizuzu engamashumi
amabili.....

Qikelela ukuthi usebenzisa insipho
elingene



Bless you!

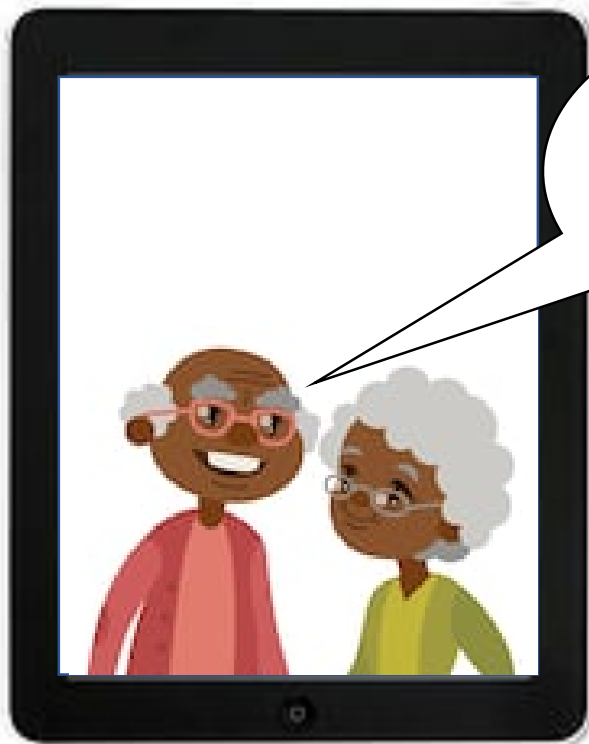


Uma ukhwehlela noma
uthimula kubalulekile ukuthi
usebenzise iphepha lokusula
(tissue)

Noma usebenzise indololwane
yakho, bese sithi "Bless You"
Kodwa okubalulekile kakhulu
ukulivimba lapho lisuka khona,
Ukungababoni labo
eselibangenile .

Ngaleyondlela siyazi ukuthi
singababeka endaweni ephephile
Nokuthi igciwane lingahambi
izindawo eziningi,
Lokhu ngokwesikhashana
kuzophela,
Ngakho asibhekeni phambili lapho
sizoba sonke ndawonye khona.





Sanibonani
futhi



Okwamanje singalithola
ngezindlela ezahlukene
Singakhuluma ocingweni
mayelana nosuku lwethu
Singabonana ngekholi yevidiyo
(video call)
Sabelane ngeziligaba zethu,
ezinkulu nezincane



Kuzobanzima ukuthi asisakwazi
ukuhlala sidlale ndawonye
Noma sizimbandakanye
njengomndeni ngendlela efanayo
Lokhu kwenza UNanny noMkhulu
bangajabuli
Okubuhlungu kakhulu ukuthi
ngeke bakwazi ukukubona

Igciwane selihambile



Bayakuthanda kakhulu futhi
bazolinda lelolanga
Lapho siyozwa khona
kumabonakude (TV) ukuthi
leligciwane selihambile
Okwamanje, asenze konke
okufanele sikwenze
Ngakho khumbula.....



QHUBEKA UGEZE LEZOZANDLA

